



STATE OF IOWA

TERRY BRANSTAD, GOVERNOR

DEPARTMENT OF EDUCATION

KIM REYNOLDS, LT. GOVERNOR

JASON E. GLASS, DIRECTOR

June 1, 2011

Carol Whang  
WestEd  
730 Harrison Street  
San Francisco, CA 94107-1242

Dear Ms. Whang:

The State of Iowa would like to request a role change in the Smarter Balanced Assessment Consortium from an Advisory State to a Governing State. As a state, we want to be more involved in the development of a new generation assessment system that will support ongoing improvements in instruction and learning. We have also adopted the Common Core Standards which are now known as our Iowa Core Standards. Our new Governor, State Board Chairperson, and State Director of Education believe this is the right time for Iowa to be involved in building a system of formative, interim, and summative assessments, organized around the Common Core Standards.

Sincerely,

Terry E. Branstad  
Governor of Iowa

Rosie Hussey  
State Board of Education President

Jason E. Glass  
State Director of Education

**Memorandum of Understanding**  
**SMARTER Balanced Assessment Consortium**  
**Race to the Top Fund Assessment Program: Comprehensive Assessment**  
**Systems Grant Application**  
CFDA Number: 84.395B

This Memorandum of Understanding ("MOU") is entered as of **June 3, 2010**, by and between the **SMARTER Balanced Assessment Consortium** (the "Consortium") and the **State of IOWA**, which has elected to participate in the Consortium as (check one)

An **Advisory State** (description in section e),

**OR**

A **Governing State** (description in section e),

pursuant to the Notice Inviting Applications for the Race to the Top Fund Assessment Program for the Comprehensive Assessment Systems Grant Application (Category A), henceforth referred to as the "Program," as published in the Federal Register on April 9, 2010 (75 FR 18171-18185).

The purpose of this MOU is to

- (a) Describe the Consortium vision and principles,
- (b) Detail the responsibilities of States in the Consortium,
- (c) Detail the responsibilities of the Consortium,
- (d) Describe the management of Consortium funds,
- (e) Describe the governance structure and activities of States in the Consortium,
- (f) Describe State entrance, exit, and status change,
- (g) Describe a plan for identifying existing State barriers, and
- (h) Bind each State in the Consortium to every statement and assurance made in the application through the following signature blocks:
  - (i)(A) Advisory State Assurance
  - OR**
  - (i)(B) Governing State Assurance
  - AND**
  - (ii) State Procurement Officer

### **(a) Consortium Vision and Principles**

The Consortium's priorities for a new generation assessment system are rooted in a concern for the valid, reliable, and fair assessment of the deep disciplinary understanding and higher-order thinking skills that are increasingly demanded by a knowledge-based economy. These priorities are also rooted in a belief that assessment must support ongoing improvements in instruction and learning, and must be useful for all members of the educational enterprise: students, parents, teachers, school administrators, members of the public, and policymakers.

The Consortium intends to build a flexible system of assessment based upon the Common Core Standards in English language arts and mathematics with the intent that all students across this Consortium of States will know their progress toward college and career readiness.

The Consortium recognizes the need for a system of formative, interim, and summative assessments—organized around the Common Core Standards—that support high-quality learning, the demands of accountability, and that balance concerns for innovative assessment with the need for a fiscally sustainable system that is feasible to implement. The efforts of the Consortium will be organized to accomplish these goals.

The comprehensive assessment system developed by the Consortium will include the following key elements and principles:

1. A Comprehensive Assessment System that will be grounded in a thoughtfully integrated learning system of standards, curriculum, assessment, instruction and teacher development that will inform decision-making by including formative strategies, interim assessments, and summative assessments.
2. The assessment system will measure the full range of the Common Core Standards including those that measure higher-order skills and will inform progress toward and acquisition of readiness for higher education and multiple work domains. The system will emphasize deep knowledge of core concepts within and across the disciplines, problem solving, analysis, synthesis, and critical thinking.
3. Teachers will be involved in the design, development, and scoring of assessment items and tasks. Teachers will participate in the alignment of the Common Core Standards and the identification of the standards in the local curriculum.
4. Technology will be used to enable adaptive technologies to better measure student abilities across the full spectrum of student performance and evaluate growth in learning; to support online simulation tasks that test higher-order abilities; to score the results; and to deliver the responses to trained scorers/teachers to access from an

## SMARTER Balanced Assessment Consortium MOU

electronic platform. Technology applications will be designed to maximize interoperability across user platforms, and will utilize open-source development to the greatest extent possible.

5. A sophisticated design will yield scores to support evaluations of student growth, as well as school, teacher, and principal effectiveness in an efficient manner.
6. On-demand and curriculum-embedded assessments will be incorporated over time to allow teachers to see where students are on multiple dimensions of learning and to strategically support their progress.
7. All components of the system will incorporate principles of Universal Design that seek to remove construct-irrelevant aspects of tasks that could increase barriers for non-native English speakers and students with other specific learning needs.
8. Optional components will allow States flexibility to meet their individual needs.

### **(b) Responsibilities of States in the Consortium**

Each State agrees to the following element of the Consortium's Assessment System:

- Adopt the Common Core Standards, which are college- and career-ready standards, and to which the Consortium's assessment system will be aligned, no later than December 31, 2011.

Each State that is a member of the Consortium in 2014–2015 also agrees to the following:

- Adopt common achievement standards no later than the 2014–2015 school year,
- Fully implement statewide the Consortium summative assessment in grades 3-8 and high school for both mathematics and English language arts no later than the 2014–2015 school year,
- Adhere to the governance as outlined in this document,
- Agree to support the decisions of the Consortium,
- Agree to follow agreed-upon timelines,
- Be willing to participate in the decision-making process and, if a Governing State, final decision, and
- Identify and implement a plan to address barriers in State law, statute, regulation, or policy to implementing the proposed assessment system and to addressing any such barriers prior to full implementation of the summative assessment components of the system.

### **(c) Responsibilities of the Consortium**

The Consortium will provide the following by the 2014-15 school year:

1. A comprehensively designed assessment system that includes a strategic use of a variety of item types and performance assessments of modest scope to assess the full range of the Common Core Standards with an emphasis on problem solving, analysis, synthesis, and critical thinking.
2. An assessment system that incorporates a required summative assessment with optional formative/benchmark components which provides accurate assessment of all students (as defined in the Federal notice) including students with disabilities, English learners, and low- and high-performing students.
3. Except as described above, a summative assessment that will be administered as a computer adaptive assessment and include a minimum of 1–2 performance assessments of modest scope.
4. Psychometrically sound scaling and equating procedures based on a combination of objectively scored items, constructed-response items, and a modest number of performance tasks of limited scope (e.g., no more than a few days to complete).
5. Reliable, valid, and fair scores for students and groups that can be used to evaluate student achievement and year-to-year growth; determine school/district/state effectiveness for Title I ESEA; and better understand the effectiveness and professional development needs of teachers and principals.
6. Achievement standards and achievement level descriptors that are internationally benchmarked.
7. Access for the State or its authorized delegate to a secure item and task bank that includes psychometric attributes required to score the assessment in a comparable manner with other State members, and access to other applications determined to be essential to the implementation of the system.
8. Online administration with limited support for paper-and-pencil administration through the end of the 2016–17 school year. States using the paper-and-pencil option will be responsible for any unique costs associated with the development and administration of the paper-and-pencil assessments.

## SMARTER Balanced Assessment Consortium MOU

9. Formative assessment tools and supports that are developed to support curricular goals, which include learning progressions, and that link evidence of student competencies to the summative system.
10. Professional development focused on curriculum and lesson development as well as scoring and examination of student work.
11. A representative governance structure that ensures a strong voice for State administrators, policymakers, school practitioners, and technical advisors to ensure an optimum balance of assessment quality, efficiency, costs, and time. The governance body will be responsible for implementing plans that are consistent with this MOU, but may make changes as necessary through a formal adoption process.
12. Through at least the 2013–14 school year, a Project Management Partner (PMP) that will manage the logistics and planning on behalf of the Consortium and that will monitor for the U.S. Department of Education the progress of deliverables of the proposal. The proposed PMP will be identified no later than August 4, 2010.
13. By September 1, 2014, a financial plan will be approved by the Governing States that will ensure the Consortium is efficient, effective, and sustainable. The plan will include as revenue at a minimum, State contributions, federal grants, and private donations and fees to non-State members as allowable by the U.S. Department of Education.
14. A consolidated data reporting system that enhances parent, student, teacher, principal, district, and State understanding of student progress toward college- and career-readiness.
15. Throughout the 2013–14 school year, access to an online test administration application, student constructed-response scoring application and secure test administration browsers that can be used by the Total State Membership to administer the assessment. The Consortium will procure resources necessary to develop and field test the system. However, States will be responsible for any hardware and vendor services necessary to implement the operational assessment. Based on a review of options and the finance plan, the Consortium may elect to jointly procure these services on behalf of the Total State Membership.

**(d) Management of Consortium Funds**

All financial activities will be governed by the laws and rules of the State of Washington, acting in the role of Lead Procurement State/Lead State, and in accordance with 34 CFR 80.36. Additionally, Washington is prepared to follow the guidelines for grant management associated with the American Recovery and Reinvestment Act (ARRA), and will be legally responsible for the use of grant funds and for ensuring that the project is carried out by the Consortium in accordance with Federal requirements. Washington has already established an ARRA Quarterly reporting system (also referred to as *1512 Reporting*).

Per Washington statute, the basis of how funding management actually transpires is dictated by the method of grant dollar allocation, whether upfront distribution or pay-out linked to actual reimbursables. Washington functions under the latter format, generating claims against grant funds based on qualifying reimbursables submitted on behalf of staff or clients, physical purchases, or contracted services. Washington's role as Lead Procurement State/Lead State for the Consortium is not viewed any differently, as monetary exchanges will be executed against appropriate and qualifying reimbursables aligned to expenditure arrangements (i.e., contracts) made with vendors or contractors operating under "personal service contracts," whether individuals, private companies, government agencies, or educational institutions.

Washington, like most States, is audited regularly by the federal government for the accountability of federal grant funds, and has for the past five years been without an audit finding. Even with the additional potential for review and scrutiny associated with ARRA funding, Washington has its fiscal monitoring and control systems in place to manage the Consortium needs.

- As part of a comprehensive system of fiscal management, Washington's accounting practices are stipulated in the State Administrative and Accounting Manual (SAAM) managed by the State's Office of Financial Management. The SAAM provides details and administrative procedures required of all Washington State agencies for the procurement of goods and services. As such, the State's educational agency is required to follow the SAAM; actions taken to manage the fiscal activities of the Consortium will, likewise, adhere to policies and procedures outlined in the SAAM.
- For information on the associated contracting rules that Washington will adhere to while serving as fiscal agent on behalf of the Consortium, refer to the Revised Code of Washington (RCW) 39.29 "Personal Service Contracts." Regulations and policies authorized by this RCW are established by the State's Office of Financial Management, and can be found in the SAAM.

### **(e) Governance Structure and Activities of States in the Consortium**

As shown in the SMARTER Balanced Assessment Consortium governance structure, the Total State Membership of the Consortium includes Governing and Advisory States, with Washington serving in the role of Lead Procurement State/Lead State on behalf of the Consortium.

A **Governing State** is a State that:

- Has fully committed to this Consortium only and met the qualifications specified in this document,
- Is a member of only one Consortium applying for a grant in the Program,
- Has an active role in policy decision-making for the Consortium,
- Provides a representative to serve on the Steering Committee,
- Provides a representative(s) to serve on one or more Work Groups,
- Approves the Steering Committee Members and the Executive Committee Members,
- Participates in the final decision-making of the following:
  - Changes in Governance and other official documents,
  - Specific Design elements, and
  - Other issues that may arise.

An **Advisory State** is a State that:

- Has not fully committed to any Consortium but supports the work of this Consortium,
- Participates in all Consortium activities but does not have a vote unless the Steering Committee deems it beneficial to gather input on decisions or chooses to have the Total Membership vote on an issue,
- May contribute to policy, logistical, and implementation discussions that are necessary to fully operationalize the SMARTER Balanced Assessment System, and
- Is encouraged to participate in the Work Groups.

#### **Organizational Structure**

##### **Steering Committee**

The Steering Committee is comprised of one representative from each Governing State in the Consortium. Committee members may be a chief or his/her designee. Steering Committee Members must meet the following criteria:

- Be from a Governing State,
- Have prior experience in either the design or implementation of curriculum and/or assessment systems at the policy or implementation level, and
- Must have willingness to serve as the liaison between the Total State Membership and Working Groups.

##### **Steering Committee Responsibilities**

- Determine the broad picture of what the assessment system will look like,



## SMARTER Balanced Assessment Consortium MOU

- Receive regular reports from the Project Management Partner, the Policy Coordinator, and the Content Advisor,
- Determine the issues to be presented to the Governing and/or Advisory States,
- Oversee the expenditure of funds in collaboration with the Lead Procurement State/Lead State,
- Operationalize the plan to transition from the proposal governance to implementation governance, and
- Evaluate and recommend successful contract proposals for approval by the Lead Procurement State/Lead State.

### **Executive Committee**

- The Executive Committee is made up of the Co-Chairs of the Executive Committee, a representative from the Lead Procurement State/Lead State, a representative from higher education and one representative each from four Governing States. The four Governing State representatives will be selected by the Steering Committee. The Higher Education representative will be selected by the Higher Education Advisory Group, as defined in the Consortium Governance document.
- For the first year, the Steering Committee will vote on four representatives, one each from four Governing States. The two representatives with the most votes will serve for three years and the two representatives with the second highest votes will serve for two years. This process will allow for the rotation of two new representatives each year. If an individual is unable to complete the full term of office, then the above process will occur to choose an individual to serve for the remainder of the term of office.

### **Executive Committee Responsibilities**

- Oversee development of SMARTER Balanced Comprehensive Assessment System,
- Provide oversight of the Project Management Partner,
- Provide oversight of the Policy Coordinator,
- Provide oversight of the Lead Procurement State/Lead State,
- Work with project staff to develop agendas,
- Resolve issues,
- Determine what issues/decisions are presented to the Steering Committee, Advisory and/or Governing States for decisions/votes,
- Oversee the expenditure of funds, in collaboration with the Lead Procurement State/Lead State, and
- Receive and act on special and regular reports from the Project Management Partner, the Policy Coordinator, the Content Advisor, and the Lead Procurement State/Lead State.

### **Executive Committee Co-Chairs**

- Two Co-chairs will be selected from the Steering Committee States. The two Co-chairs must be from two different states. Co-chairs will work closely with the Project Management Partner. Steering Committee members wishing to serve as Executive Committee Co-chairs will submit in writing to the Project Management Partner their willingness to serve. They will need to provide a document signed by their State Chief indicating State support for this role. The Project Management Partner will then prepare a ballot of interested individuals. Each Steering Committee member will vote on the two individuals they wish to serve as Co-chair. The individual with the most votes will serve as the new Co-chair.
- Each Co-chair will serve for two years on a rotating basis. For the first year, the Steering committee will vote on two individuals and the one individual with the most votes will serve a three-year term and the individual with the second highest number of votes will serve a two-year term.
- If an individual is unable to complete the full term of office, then the above process will occur to choose an individual to serve for the remainder of the term of office.

### **Executive Committee Co-Chair Responsibilities**

- Set the Steering Committee agendas,
- Set the Executive Committee agenda,
- Lead the Executive Committee meetings,
- Lead the Steering Committee meetings,
- Oversee the work of the Executive Committee,
- Oversee the work of the Steering Committee,
- Coordinate with the Project Management Partner,
- Coordinate with Content Advisor,
- Coordinate with Policy coordinator,
- Coordinate with the Technical Advisory Committee (TAC), and
- Coordinate with Executive Committee to provide oversight to the Consortium.

### **Decision-making**

Consensus will be the goal of all decisions. Major decisions that do not reach consensus will go to a simple majority vote. The Steering Committee will determine what issues will be referred to the Total State Membership. Each member of each group (Advisory/Governing States, Steering Committee, Executive Committee) will have one vote when votes are conducted within each group. If there is only a one to three vote difference, the issue will be re-examined to seek greater consensus. The Steering Committee will be responsible for preparing additional information as to the pros and cons of the issue to assist voting States in developing consensus and reaching a final decision. The Steering Committee may delegate this responsibility to the Executive Committee. The Executive Committee will decide which decisions or issues are votes to

## SMARTER Balanced Assessment Consortium MOU

be taken to the Steering Committee. The Steering Committee makes the decision to take issues to the full Membership for a vote.

The Steering Committee and the Governance/Finance work group will collaborate with each Work Group to determine the hierarchy of the decision-making by each group in the organizational structure.

### **Work Groups**

The Work Groups are comprised of chiefs, assessment directors, assessment staff, curriculum specialists, professional development specialists, technical advisors and other specialists as needed from States. Participation on a workgroup will require varying amounts of time depending on the task. Individuals interested in participating on a Work Group should submit their request in writing to the Project Management Partner indicating their preferred subgroup. All Governing States are asked to commit to one or more Work Groups based on skills, expertise, and interest within the State to maximize contributions and distribute expertise and responsibilities efficiently and effectively. The Consortium has established the following Work Groups:

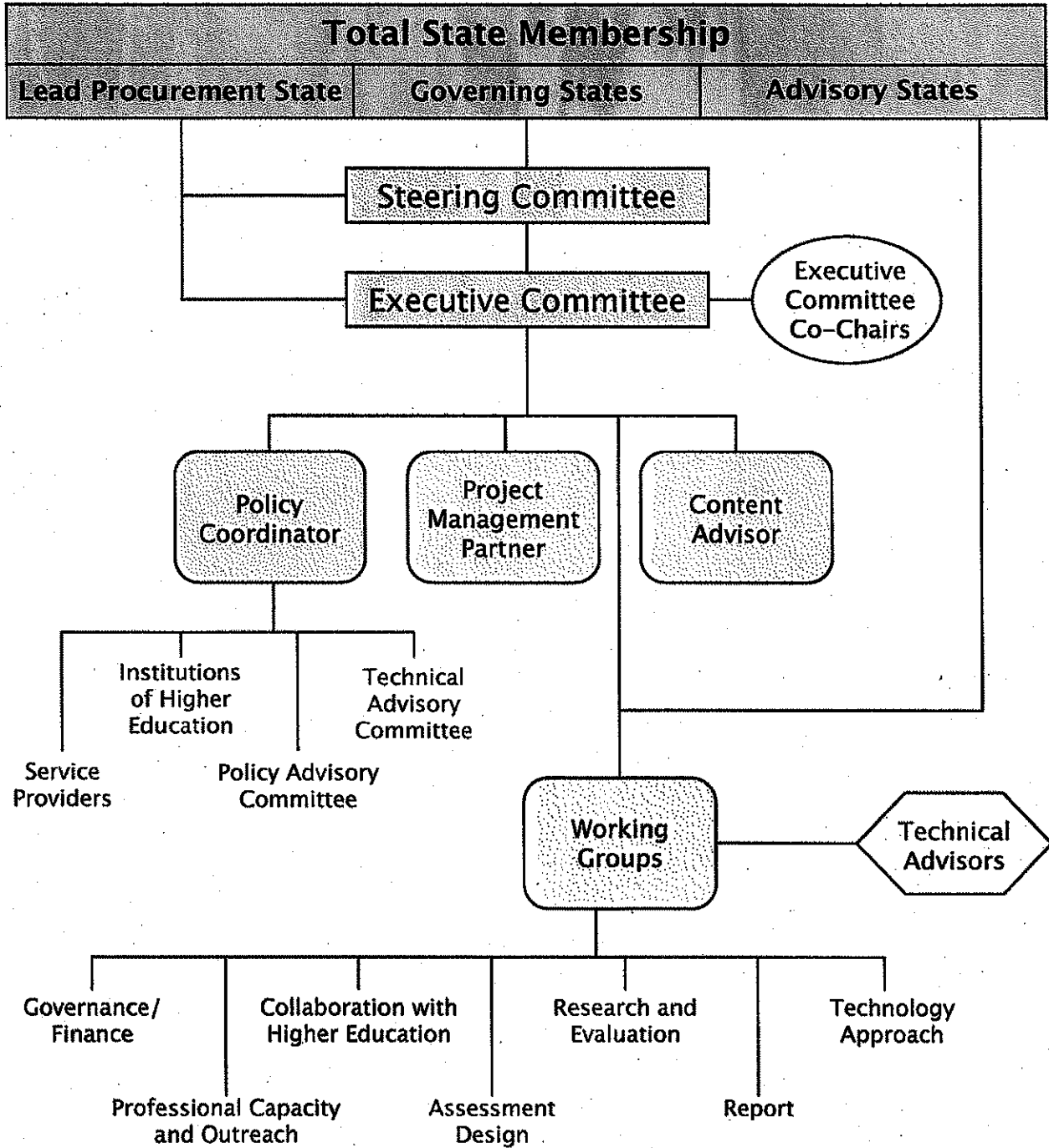
- Governance/Finance,
- Assessment Design,
- Research and Evaluation,
- Report,
- Technology Approach,
- Professional Capacity and Outreach, and
- Collaboration with Higher Education.

The Consortium will also support the work of the Work Groups through a Technical Advisory Committee (TAC). The Policy Coordinator in collaboration with the Steering Committee will create various groups as needed to advise the Steering Committee and the Total State Membership. Initial groups will include

- Institutions of Higher Education,
- Technical Advisory Committee,
- Policy Advisory Committee, and
- Service Providers.

An organizational chart showing the groups described above is provided on the next page.

# SMARTER Balanced Assessment Consortium Organizational Structure



**(f) State Entrance, Exit, and Status Change**

This MOU shall become effective as of the date first written above upon signature by both the Consortium and the Lead Procurement State/Lead State (Washington) and remain in force until the conclusion of the Program, unless terminated earlier in writing by the Consortium as set forth below.

**Entrance into Consortium**

Entrance into the Smarter Balanced Assessment Consortium is assured when:

- The level of membership is declared and signatures are secured on the MOU from the State's Commissioner, State Superintendent, or Chief; Governor; and President/Chair of the State Board of Education (if the State has one);
- The signed MOU is submitted to the Consortium Grant Project Manager (until June 23) and then the Project Management Partner after August 4, 2010;
- The Advisory and Governing States agree to and adhere to the requirements of the governance;
- The State's Chief Procurement Officer has reviewed its applicable procurement rules and provided assurance that it may participate in and make procurements through the Consortium;
- The State is committed to implement a plan to identify any existing barriers in State law, statute, regulation, or policy to implementing the proposed assessment system and to addressing any such barriers prior to full implementation of the summative assessment components of the system; and
- The State agrees to support all decisions made prior to the State joining the Consortium.

After receipt of the grant award, any request for entrance into the Consortium must be approved by the Executive Committee. Upon approval, the Project Management Partner will then submit a change of membership to the USED for approval. A State may begin participating in the decision-making process after receipt of the MOU.

**Exit from Consortium**

Any State may leave the Consortium without cause, but must comply with the following exit process:

- A State requesting an exit from the Consortium must submit in writing their request and reasons for the exit request,
- The written explanation must include the statutory or policy reasons for the exit,
- The written request must be submitted to the Project Management Partner with the same signatures as required for the MOU,
- The Executive Committee will act upon the request within a week of the request, and
- Upon approval of the request, the Project Management Partner will then submit a change of membership to the USED for approval.

SMARTER Balanced Assessment Consortium MOU

**Changing Roles in the Consortium**

A State desiring to change from an Advisory State to a Governing State or from a Governing State to an Advisory State may do so under the following conditions:

- A State requesting a role change in the Consortium must submit in writing their request and reasons for the request,
- The written request must be submitted to the Project Management Partner with the same signatures as required for the MOU, and
- The Executive Committee will act upon the request within a week of the request and submit to the USED for approval.



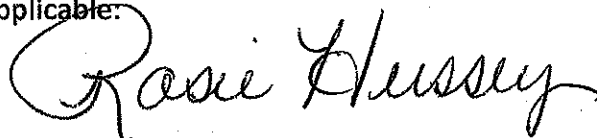
**(g) Plan for Identifying Existing State Barriers**

Each State agrees to identify existing barriers in State laws, statutes, regulations, or policies by noting the barrier and the plan to remove the barrier. Each State agrees to use the table below as a planning tool for identifying existing barriers. States may choose to include any known barriers in the table below at the time of signing this MOU.

Barrier	Issue/Risk of Issue (if known)	Statute, Regulation, or Policy	Governing Body with Authority to Remove Barrier	Approximate Date to Initiate Action	Target Date for Removal of Barrier	Comments
LEAs may not have the capacity for computer adaptive testing.	Issue	Policy	Local School Boards	Spring 2012	Fall 2013	Funds to hardware and bandwidth.
State Board may not adopt Common Core.	Risk	Policy	State Board	August 2, 2010	December 2011	
Iowa does not have a state appropriation for assessment	Issue	Statute	Legislature	Spring 2013	Spring 2013	
IHE acceptance of final assessment and approval of MOU	Risk	Policy	IHE Governance	Spring 2013	Fall 2013	
IHE identification of remedial courses to align with passing the summative assessment	Risk	Business Rule	Individual IHEs	Spring 2013	Fall 2013	
Iowa may not adopt core achievement standards by 2014-15	Risk	Policy	State Board	Spring 2013	Fall 2013	

[remainder of page intentionally left blank]

**(h) Bind each State in the Consortium to every statement and assurance made in the application through the following signature blocks**

<p><b>(h)(i)(A) ADVISORY STATE SIGNATURE BLOCK</b> for Race to the Top Fund Assessment Program Comprehensive Assessment Systems Grant Application Assurances.</p> <p><i>(Required from all "Advisory States" in the Consortium.)</i></p> <p>As an <u>Advisory State</u> in the SMARTER Balanced Assessment Consortium, I have read and understand the roles and responsibilities of Advisory States, and agree to be bound by the statements and assurances made in the application.</p>	
<p>State Name: Iowa</p>	
<p>Governor or Authorized Representative of the Governor (Printed Name): Chester J. Culver</p>	<p>Telephone: 515-281-5211</p>
<p>Signature of Governor or Authorized Representative of the Governor: </p>	<p>Date: 6/8/10</p>
<p>Chief State School Officer (Printed Name): Kevin Fangman</p>	<p>Telephone: 515-281-3436</p>
<p>Signature of the Chief State School Officer: </p>	<p>Date: 6/8/10</p>
<p>President of the State Board of Education, if applicable (Printed Name): Rosie Hussey</p>	<p>Telephone: 515-281-3436</p>
<p>Signature of the President of the State Board of Education, if applicable: </p>	<p>Date: 6/3/10</p>

**(h)(i)(B) GOVERNING STATE SIGNATURE BLOCK for Race to the Top Fund Assessment Program Comprehensive Assessment Systems Grant Application Assurances**

*(Required from all "Governing States" in the Consortium.)*

As a Governing State in the SMARTER Balanced Assessment Consortium, I have read and understand the roles and responsibilities of Governing States, and agree to be bound by the statements and assurances made in the application.

I further certify that as a Governing State I am fully committed to the application and will support its implementation.

State Name:

Governor or Authorized Representative of the Governor (Printed Name):

Telephone:

Signature of Governor or Authorized Representative of the Governor:

Date:

Chief State School Officer (Printed Name):

Telephone:

Signature of the Chief State School Officer:

Date:

President of the State Board of Education, if applicable (Printed Name):

Telephone:

Signature of the President of the State Board of Education, if applicable:

Date:



**(h)(ii) STATE PROCUREMENT OFFICER SIGNATURE BLOCK for Race to the Top Fund Assessment Program Comprehensive Assessment Systems Grant Application Assurances.**

*(Required from all States in the Consortium.)*

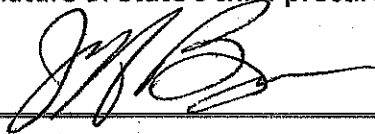
I certify that I have reviewed the applicable procurement rules for my State and have determined that it may participate in and make procurements through the SMARTER Balanced Assessment Consortium.

State Name:  
Iowa

State's chief procurement official (or designee), (Printed Name):  
Jeff Berger

Telephone:  
515-281-3968

Signature of State's chief procurement official (or designee),:



Date:  
6/4/10